



MIDClone

Liberate Data. Transform Care.

*The New Data Paradigm & The New
world of Synthetic Data*

Boaz Gur-Lavie



Ziv Ofek
Founder & CEO

Founder & former Chief
Innovation Officer,
dbMotion

Acquired for \$235M



Acquired by



Boaz Gur-Lavie
Founder & CFO

Former CFO STARLIMS and
Abbott Labs informatics

Acquired for \$123M



Acquired by



Luz Erez
Founder & CTO

Founder of ISI which became
IPEX-ISI

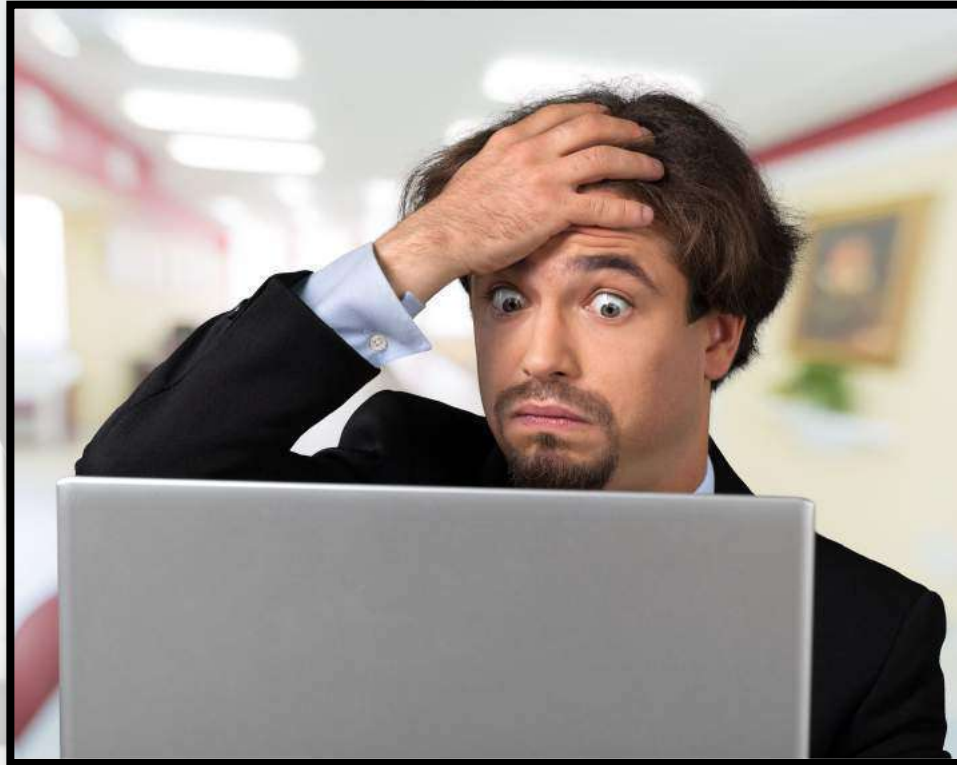
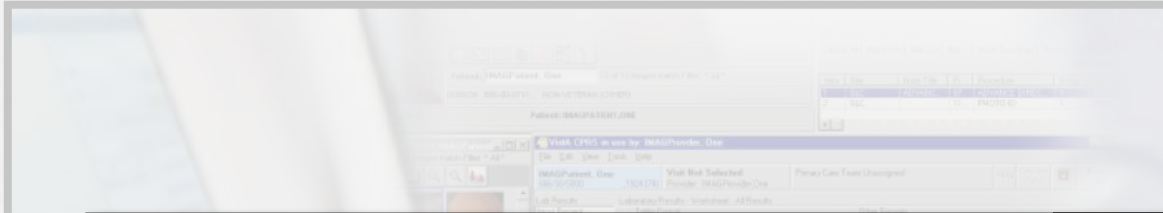
IPEX-ISI

Acquired by



The Power of the Data... and Reality

Data



Technologies

PACK35 | DATA SCIENCE



WE FINALLY GOT THE RESULTS
OF YOUR DATA QUERY.
SORRY IT TOOK SO LONG.



Key Challenges

Silos



Data Volume



Semantics



Proprietary



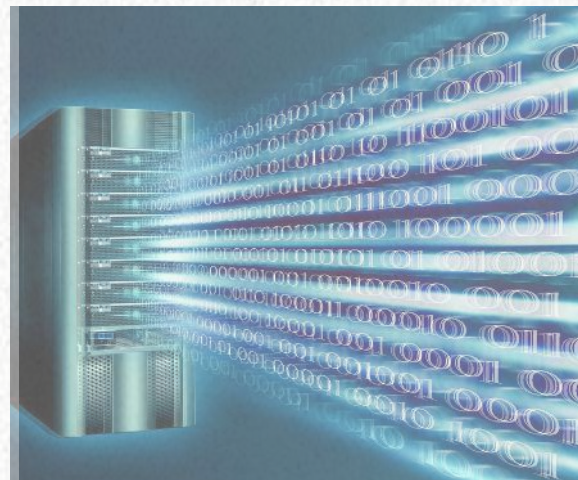
Data Quality



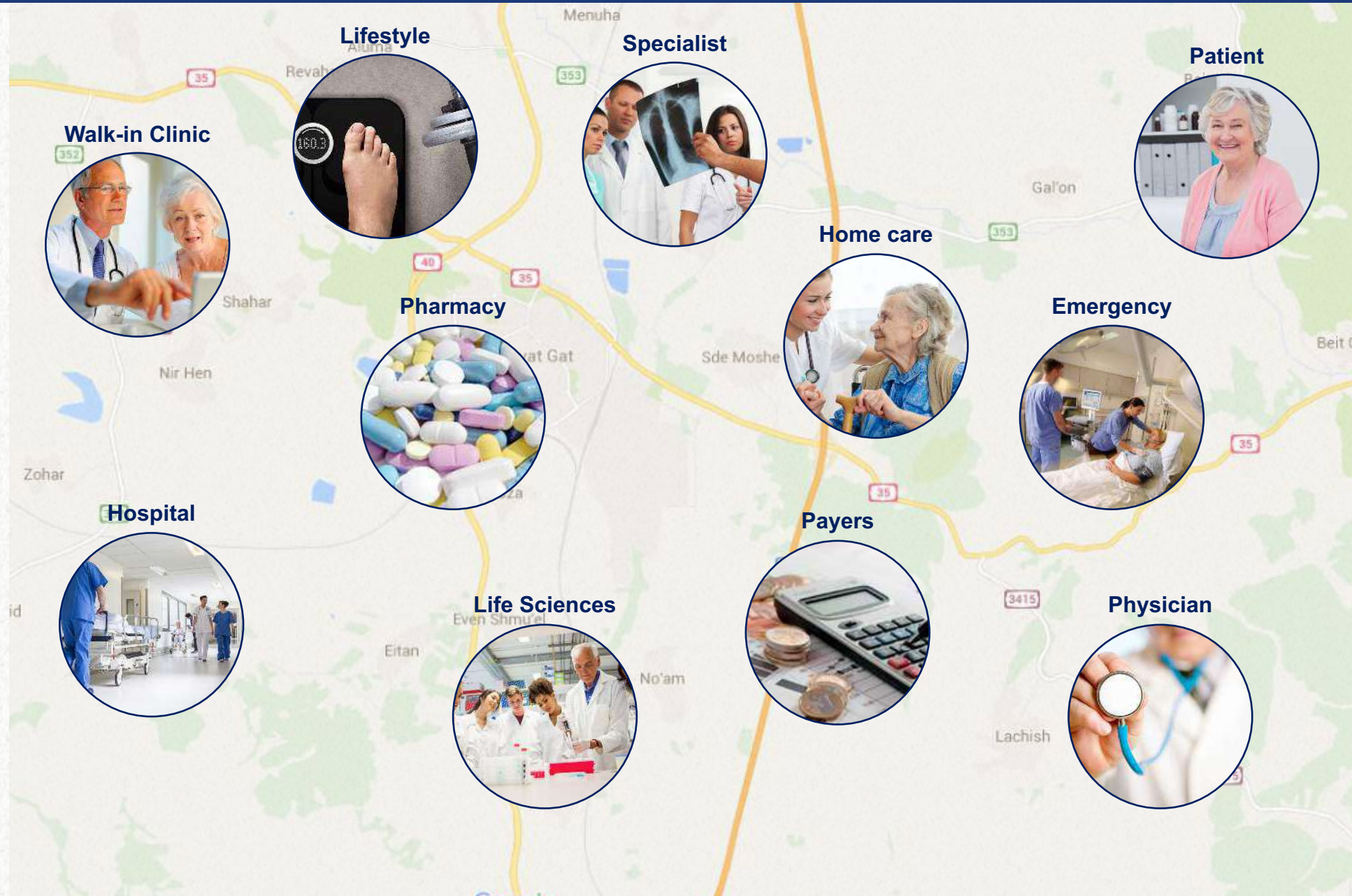
Privacy



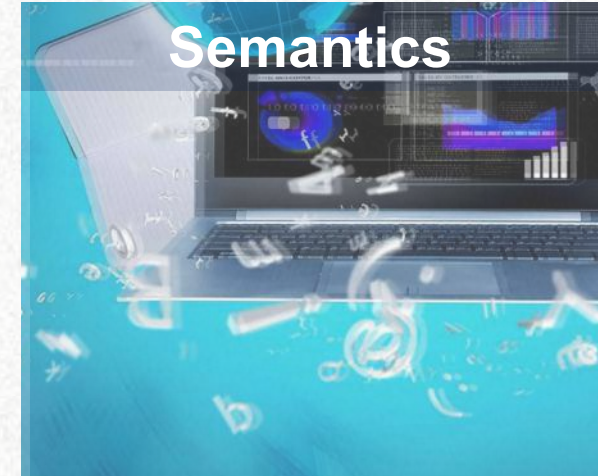
Key Challenges



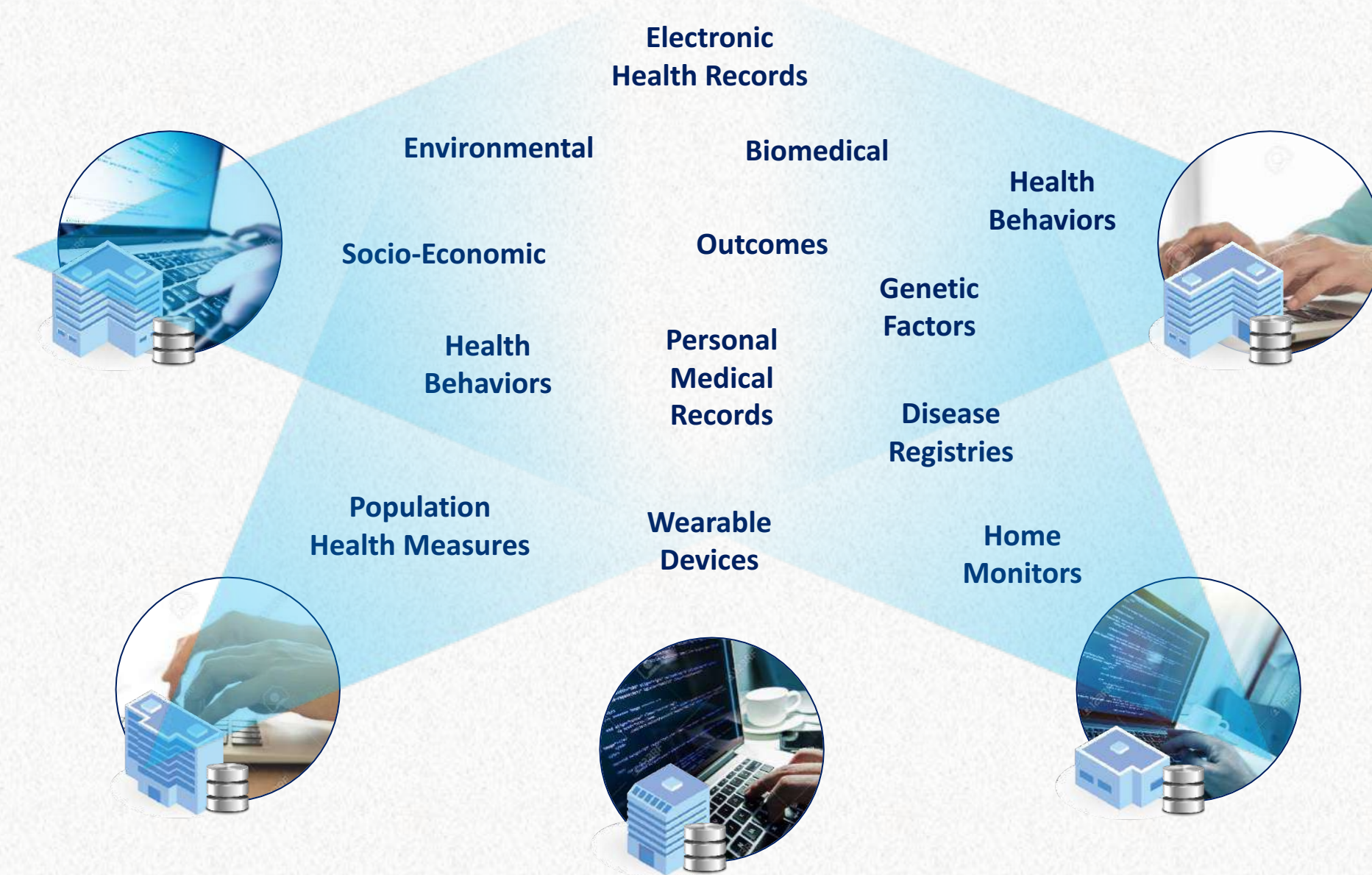
Data Silos



Key Challenges



Data Collection is Growing Exponentially



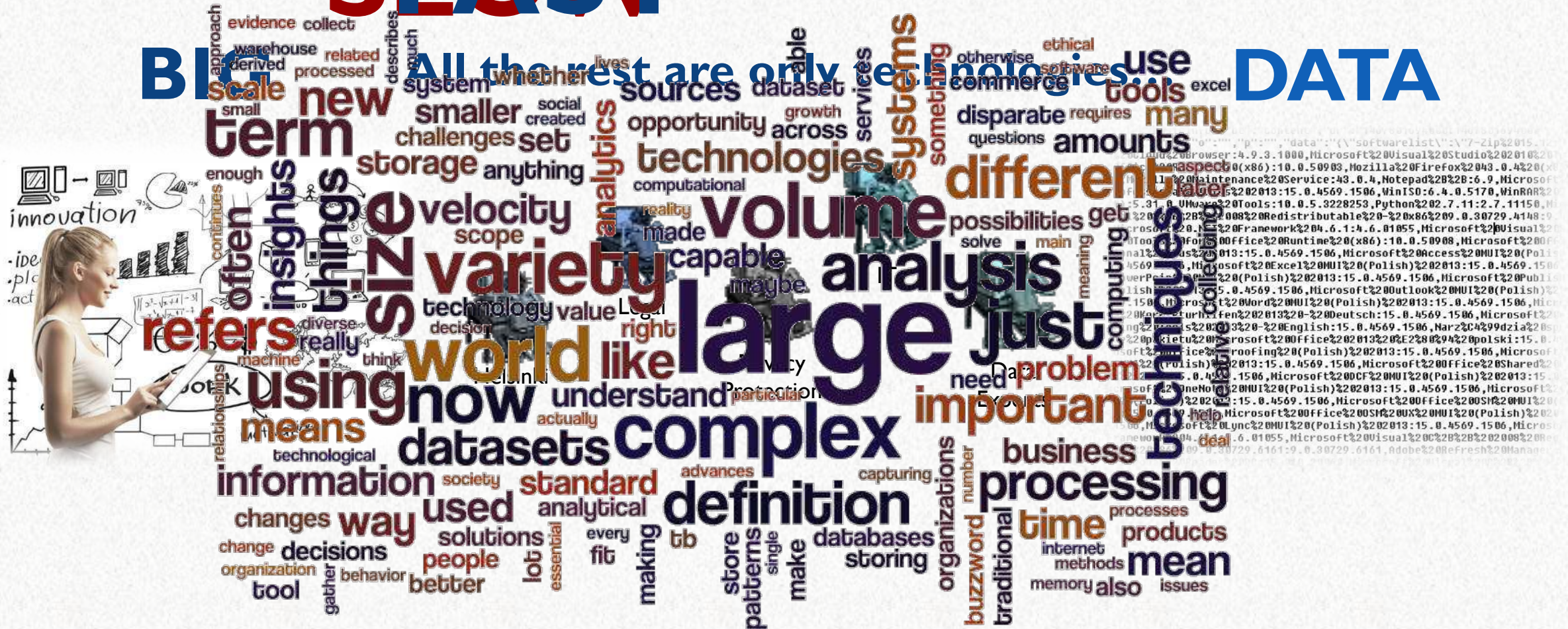
BIG DATA

SEAST

Big data

related
processed
described
much
All the rest are only technologies.
system whether lives sources dataset commerce otherwise technical software US
how

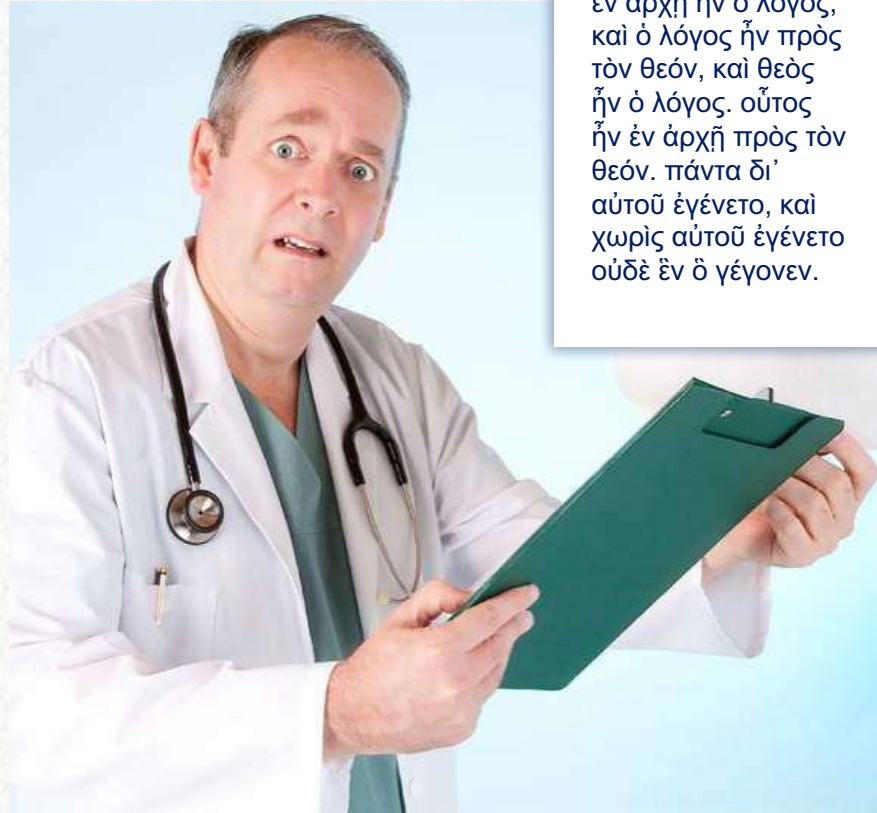
DATA



Key Challenges



Semantics



ἐν ἀρχῇ ἦν ὁ λόγος,
καὶ ὁ λόγος ἦν πρὸς
τὸν θεόν, καὶ θεὸς
ἦν ὁ λόγος. οὗτος
ἦν ἐν ἀρχῇ πρὸς τὸν
θεόν. πάντα δι'
αὐτοῦ ἐγένετο, καὶ
χωρὶς αὐτοῦ ἐγένετο
οὐδὲ ἓν ὃ γέγονεν.



Never underestimate the
power of the wrong clinical code.

Key Challenges

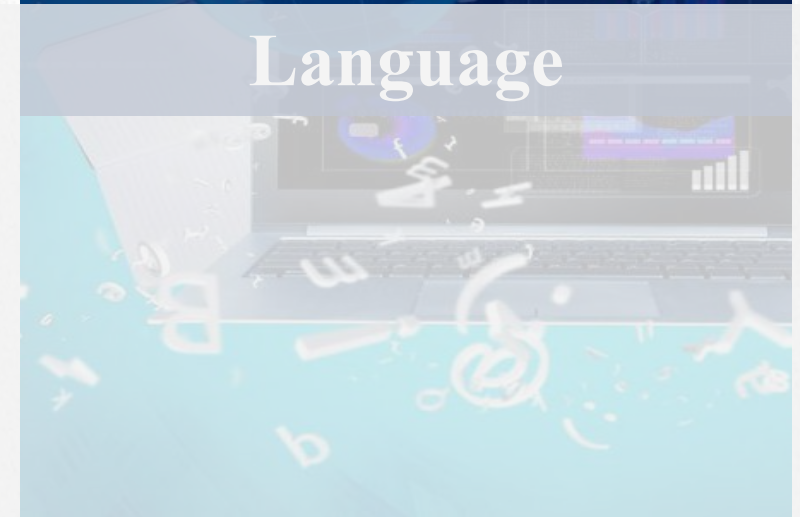
Silos



Data Volume



Language



Proprietary



Data Quality



Privacy



Access to Data Today

Risk Mitigation

- Formal study submission
- IRB approval
- Business associate agreements
- Data sharing agreements
- Legal Reviews
- Data reviews and manual data retrieval
- De-identification process
- Limited cohort sizes
- Limited data utility

Expensive



Time Consuming



Non-Repeatable



IT/Expert Dependent



One-Off Projects



Bureaucracy



Limited Access



Medical Center – Data Owner

Restricted



Research Institutes – Insurance – IT – Pharmaceutical – Medical Device – Startups

The Never Ending Battle

Anonymization

- ✓ Data Removing (Safe Harbor)
- ✓ Aggregation
- ✓ Masking & Blurring
- ✓ Noise
- ✓ Pseudonyms

De-Anonymization

- ✓ Outliers Analysis
- ✓ ϵ Differential Privacy
- ✓ Probability Matching
- ✓ Data Mining
- ✓ AI



DATA RE-IDENTIFICATION

Govt pulls dataset that jeopardised

9 Treat anonymised data as personal information: Pilgrim

By Paris Cowan
Nov 18 2015
12:17PM



2 Comments

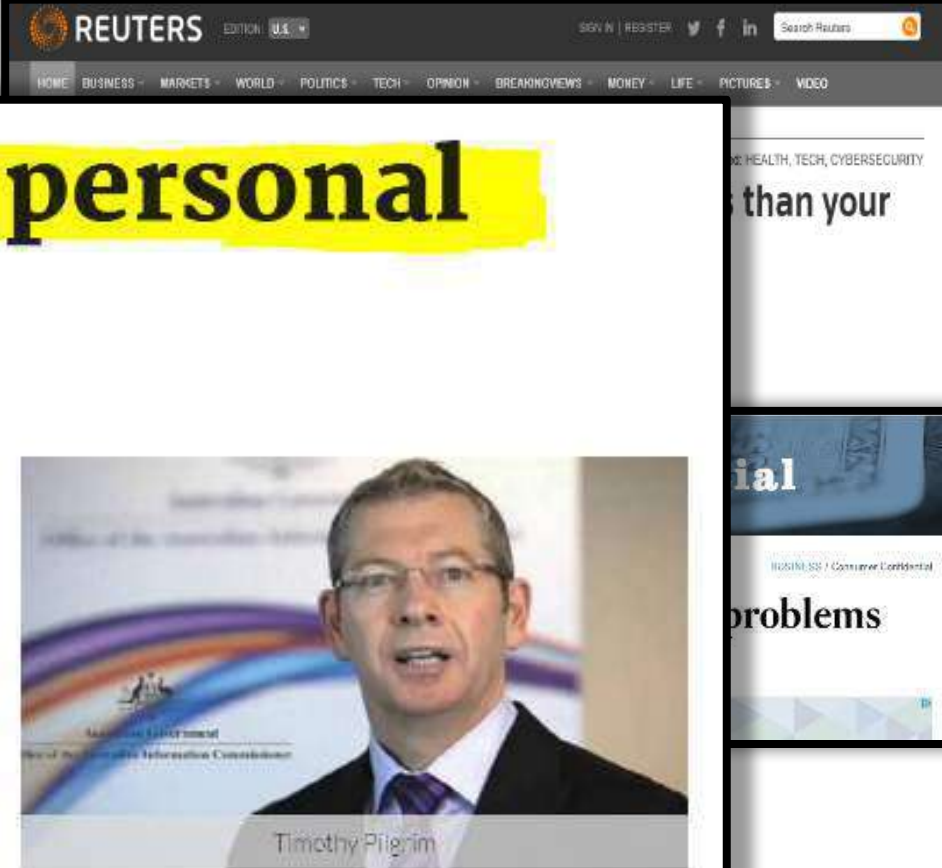


Privacy Commissioner warns of modern matching methods.

Australian Privacy Commissioner Timothy Pilgrim has warned businesses that de-identifying datasets will not absolve them of the need to meet the stringent information protection demands of the Privacy Act.

Speaking to the International Association of Privacy Professionals today, Pilgrim said even anonymised datasets should be treated the same as personally identifiable information to future-proof organisations against increasingly sophisticated data matching efforts.

"The current challenge facing all organisations that handle large data sets is that data sets of



EUROPE

EUGDPR.org

The Regulation

The Process

More Resources

Our Partners

- Significant new fines: the greater of **20M euro** or **4% of annual global turnover**

The EU General Data Protection Regulation (GDPR) is the most important change in data privacy regulation in 20 years -

- Consent harder to obtain:
... always have to be **express/opt in**

WHITE & CASE People Services Our Thinking About Us Join Us



WHITE & CASE People Services Our Thinking About Us Join Us



agreed (although, as the European Parliament's [press release](#) clarified, before the GDPR becomes law a few formalities remain, which are not expected to be completed before February 2016).

Key changes and business impact

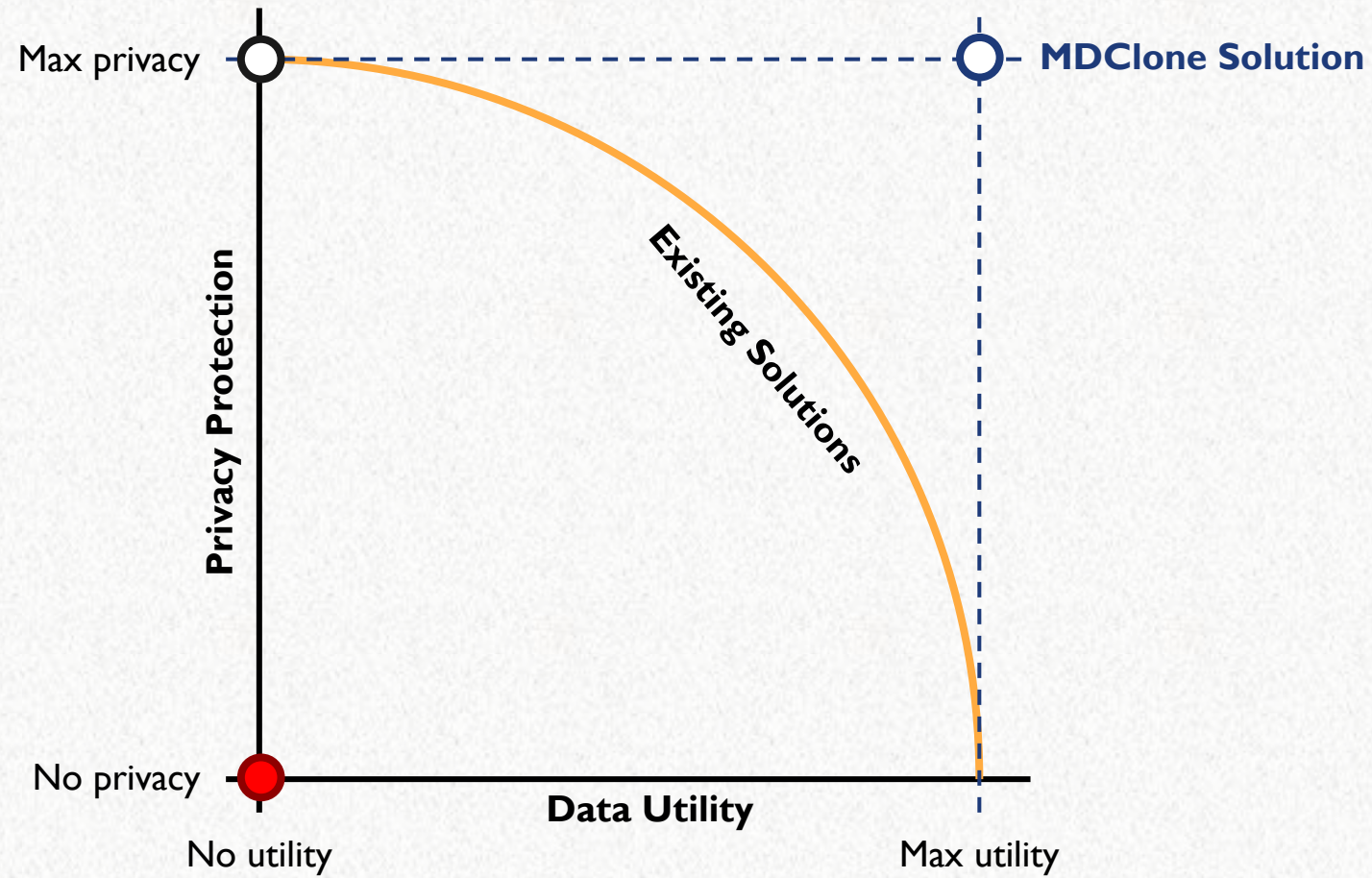
The GDPR brings significant changes to EU data protection law, many of which greatly impact businesses:

- **Significant new fines:** Maximum fines of the greater of **€20 million** or **4% of annual global turnover** *per* breach (a dramatic increase from the current typical maximum of less than €1 million).
- **Broader territorial reach:** Even businesses outside the EU will be subject to the GDPR, if they are offering goods or services to, or monitoring the behaviour of, EU residents (currently they are only caught if they operate data processing equipment in the EU). See further on this below.
- **Data breach reporting:** In most cases breaches will have to be reported within **72 hours**.
- **Stronger rights for individuals:** Individuals will have stronger rights against businesses, including the 'right to be forgotten'. Re-using existing data for new purposes will also become more difficult.
- **Consent harder to obtain:** Consent will always have to be express/opt-in (a 'clear affirmative action') whereas, under the existing regime, implied/opt-out consent is sometimes sufficient.
- **Data Protection Officers:** Most businesses that regularly monitor individuals, or regularly process sensitive personal data, will have to formally appoint an independent Data Protection Officer.



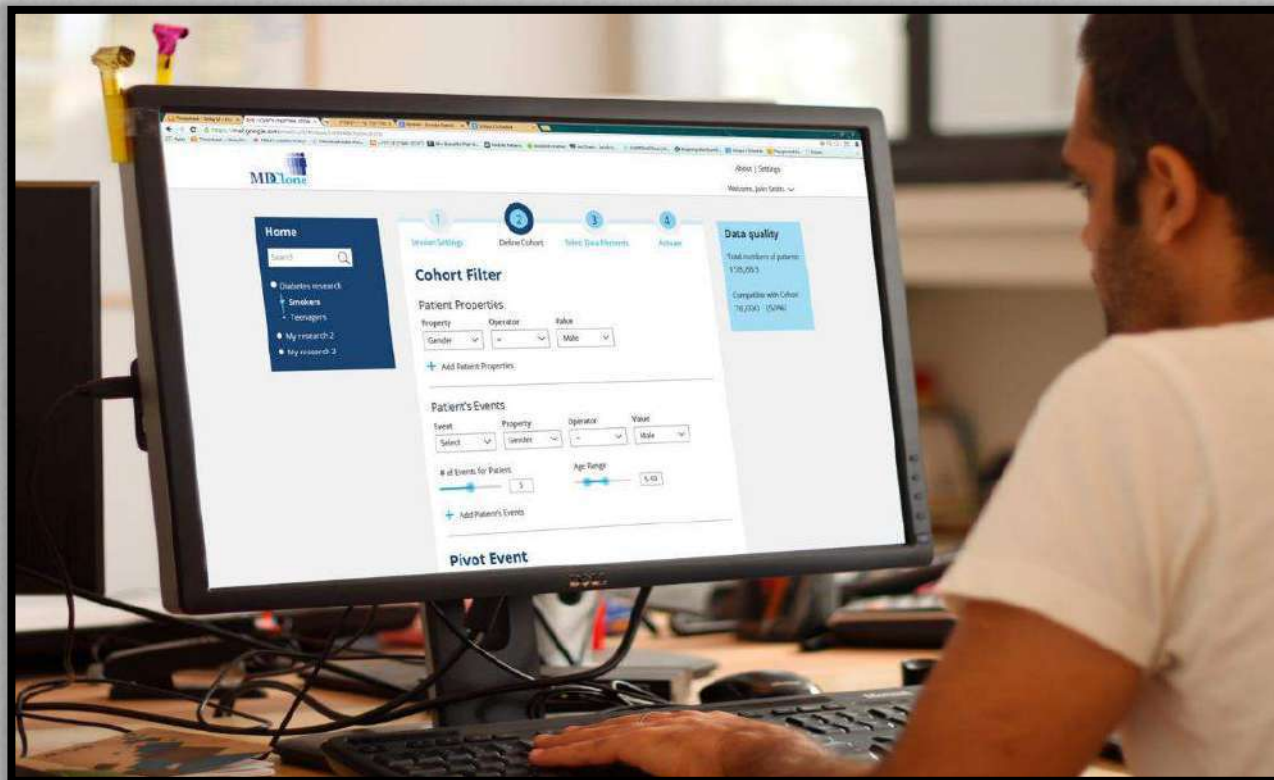
There is a need For a New Paradigm

A New Paradigm



The new world of Synthetic data - MDClone Mission

Liberating healthcare data in **real time** with zero-risk to patient privacy to transform healthcare.



- ✓ **Any user** (no need for programming skills)
- ✓ Can ask **any question**
- ✓ With **zero time** to data & insights
- ✓ and **zero risk** to patient privacy
- ✓ With **no mediators**
- ✓ And **no bottlenecks**

MDCClone Healthcare Data Platform

Data Users

Medical Center



Insurance



Gov. & Research Inst.



IT Companies



Pharmaceuticals



Medical Device Companies



Startups



Data Owner

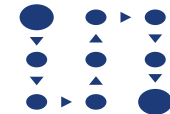
Big Data



Query Studio



Semantics



Business Process Management



Content Mng.



Synthetic Engine



EHRs



HIE



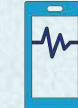
Claims



Data Warehouses



Registries



Devices



Genomics

MDCClone PHI Firewall (Privacy)

Fully identified data

Deidentified data

Deeply anonymized data

Synthetic data

MDCClone Sandbox
Research | Analysis | Export
(External Universe)

The Paradigm Differentiators

Time to Data & Insights

- No mediators
- **Direct** access
- No need for **technical skills**
- Familiar **terminologies**



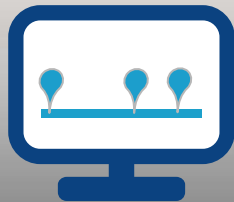
Comprehensive Platform

- **AI-in-One** Product
- **Modern** Big-Data technology



Longitudinal Data Representation

- One **patient story**
- One **Mapping** process
- Connect data from **multiple sources**



Zero-Risk to Patient Privacy

- Automatic **PHI Privacy Firewall**
- Eliminate **risk** & security **vulnerabilities**
- Maintain **data utility**



Longitudinal Patient Representation

Outcome of **diabetes type 2** patients, treated for at least 1 year with **metformin** and **failed**, then received **oral hypoglycemic** add-on within 3 months of metformin failure.



MDLone

Home: Heart Research Institute / Session: Critical Heart Failure

Session Settings

Session Name: Critical Heart Failure Session Info: Info [Delete Session](#) [Save Session](#)

Date Range: 03.05.1920 11.10.2016 [Select the date range from which you want to extract the data](#) [Creation Time](#) 16.10.2016

Cohort Filter

Defines the population criterias of the research

Patient Properties

Select the demographic properties of your cohort (not mandatory)

Property	Hierarchy Level/Function	Condition	Value
Gender	Unavailable	equals to	M

[+ Add Patient Property](#)

Patient Events

Select the event properties of your cohort throughout the patient lifetime (not mandatory)

[+ Add Event](#)

Reference Event

Select the timeline point, to which the output events will reference to

☒ Use Event As Reference

☐ No Reference Event

Event	Get	Age Range	Property	Hierarchy Level/Function	Condition	Value
Diagnoses	First	15-85	Diagnosis	Parent4	equals to	ISO

[+ Add Reference Property](#)

Use event date as Reference date: DateofEvent

[Save Session](#) [Column Definition](#)

MDCClone Differentiators

Time to Data & Insights

- No mediators
- **Direct** access
- No need for **technical skills**
- Familiar **terminologies**



Comprehensive Platform

- **AI-in-One** Product
- **Modern** Big-Data technology



Longitudinal Data Representation

- One patient story
- One **Mapping** process
- Connect data from **multiple sources**



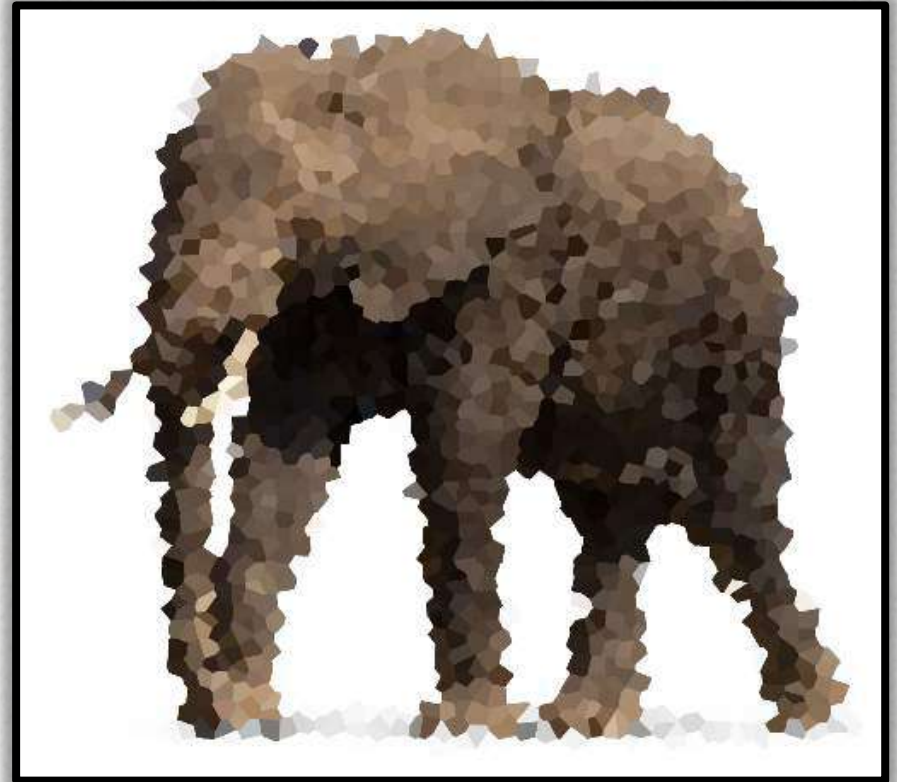
Zero-Risk to Patient Privacy

- Automatic **PHI Privacy Firewall**
- Eliminate **risk** & security **vulnerabilities**
- Maintain **data utility**

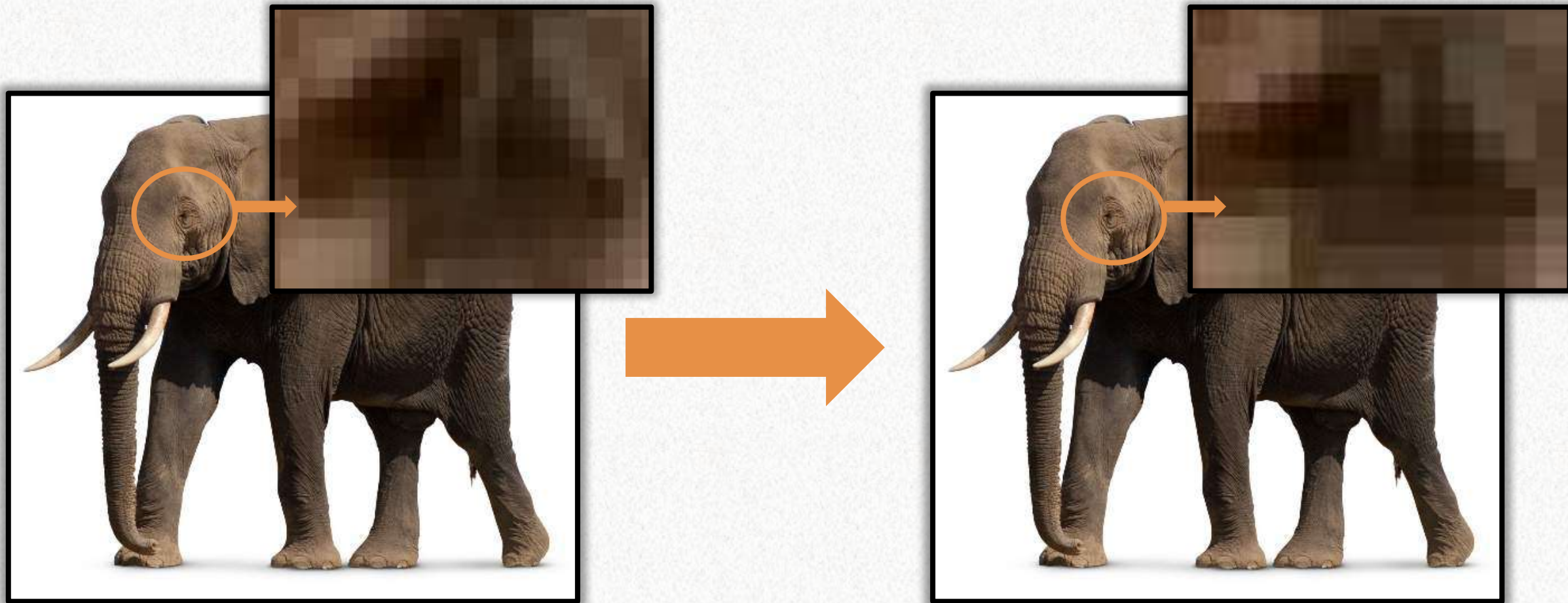


Existing Approaches to Protecting Privacy

- **Delete** information
- **Blur** numerical data
- **Hash** distinct values
- **Shift** date data
- **Block** information access
- **Aggregate** data (kill details)
- Data “**corruption**”



The MDClone Synthetic Approach



MDCClone Synthetic Approach

Original Data



- Size of cohort: 950
- Average age: 37.5
- Standard deviation: 1.68
- Average weight 72.8
- ...

Fully identifiable

Synthetic Data



- Size of cohort: 935
- Average age: 37.8
- Standard deviation: 1.71
- Average weight 72.3
- ...

Zero-risk of patient identification

Risk factors for hypoglycemia-related hospitalization

MDCClone PHI Firewall (Privacy)

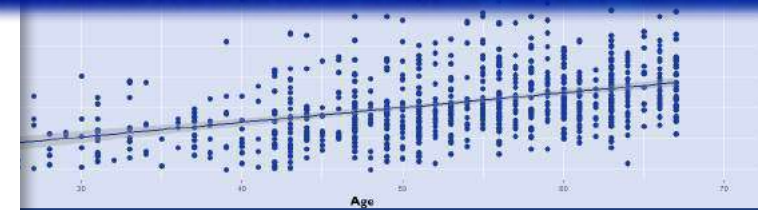
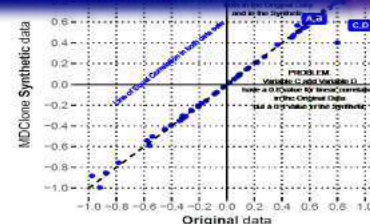
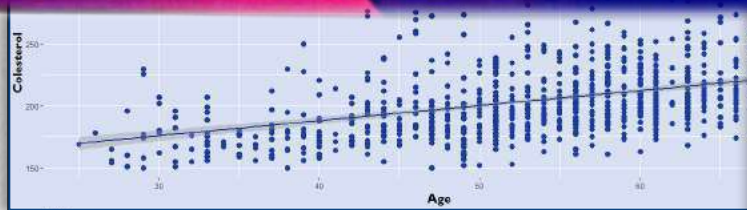


רמב"ם
הקריה הרפואית לבריאות האדם



The Risk for Hypoglycemia Using Different Types of Basal Insulin: Preliminary results from a retrospective study using MDCClone platform

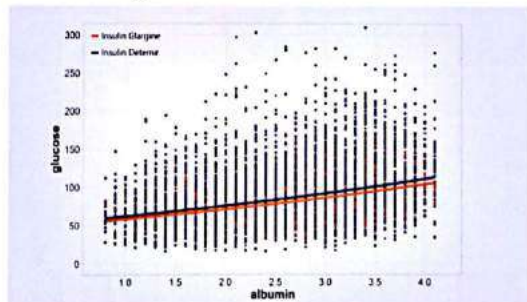
Irit Hochberg, MD | Institute of Endocrinology, Diabetes and Metabolism, Rambam Health Care Campus, Haifa, Israel



Original Data

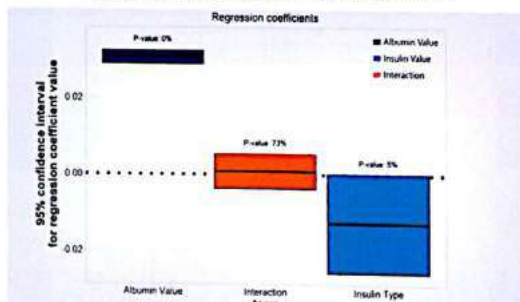
RESULTS

Insulin type influence is similar to all albumin values



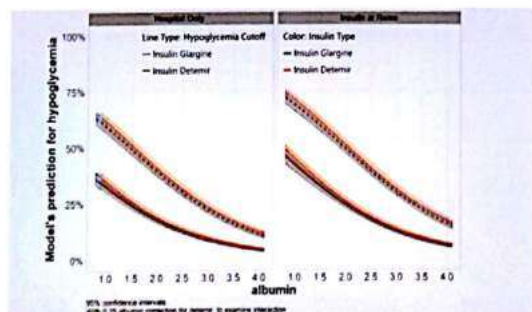
Lines are regression model with a boxcox transformation for glucose level as a function of albumin values, type of insulin and their interaction

Regression's interaction term is not significant



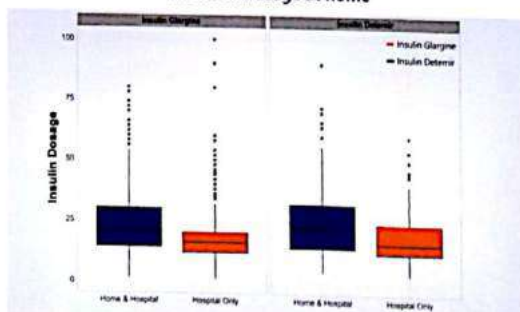
Plot shows 95% confidence for regression's coefficients. Significant coefficients should be different from 0. The interaction term is not significant, which implies that the drugs influence does not diverge in small albumin values

Logistic regression prediction for hypoglycemia



Two types of hypoglycemia definitions are used, and the model is separated for two types of patients. Insulin type was corrected to observe interaction effect.

Confounding influence of insulin dosage and insulin usage at home



Dosage is significantly different for the two types of patients. Better model is produced by correcting with home usage than by the patients dose level.

CONCLUSIONS

Hypoalbuminemia is a strong risk factor for hypoglycemia, regardless of the type of insulin used. Insulin type influence is similar to all albumin values.

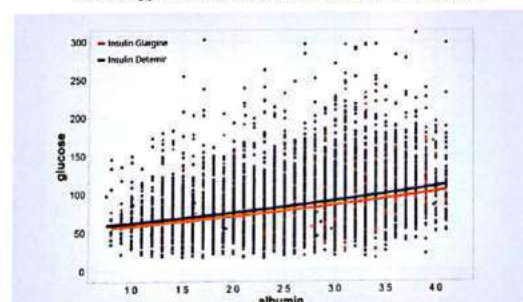
CONCLUSIONS

Hypoalbuminemia is a strong risk factor for hypoglycemia, regardless of the type of insulin used. Insulin type influence is similar to all albumin values.

Synthetic Data

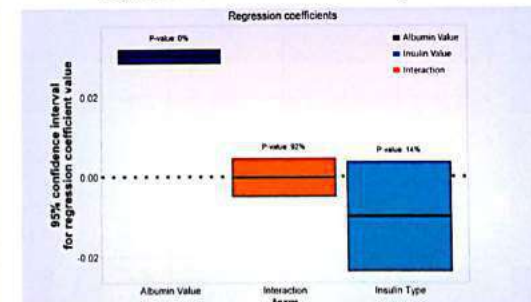
RESULTS

Insulin type influence is similar to all albumin values



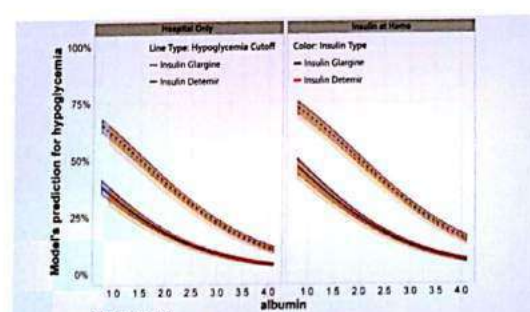
Lines are regression model with a boxcox transformation for glucose level as a function of albumin values, type of insulin and their interaction

Regression's interaction term is not significant



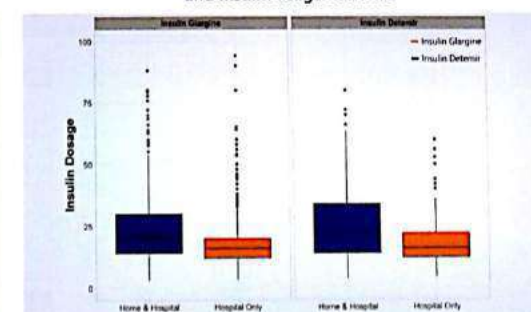
Plot shows 95% confidence for regression's coefficients. Significant coefficients should be different from 0. The interaction term is not significant, which implies that the drugs influence does not diverge in small albumin values

Logistic regression prediction for hypoglycemia



Two types of hypoglycemia definitions are used, and the model is separated for two types of patients. Insulin type was corrected to observe interaction effect.

Confounding influence of insulin dosage and insulin usage at home



Dosage is significantly different for the two types of patients. Better model is produced by correcting with home usage than by the patients dose level.

CONCLUSIONS

Hypoalbuminemia is a strong risk factor for hypoglycemia, regardless of the type of insulin used. Insulin type influence is similar to all albumin values.

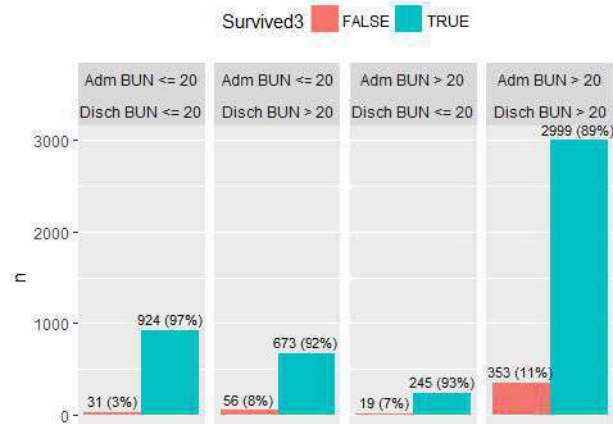
CONCLUSIONS

Hypoalbuminemia is a strong risk factor for hypoglycemia, regardless of the type of insulin used. Insulin type influence is similar to all albumin values.

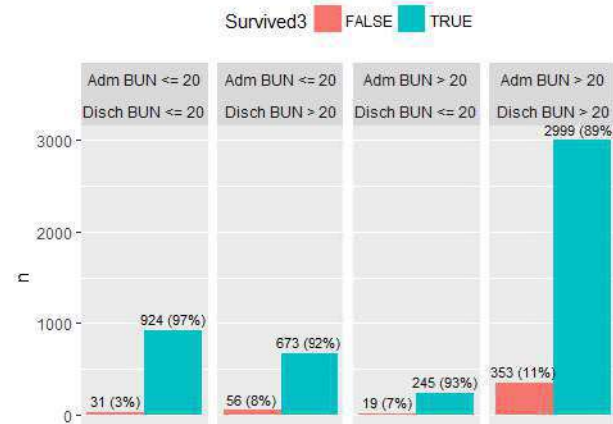
Mortality Rate and BUN Variation Between Admission and Discharge

Prof. Zaher Azam

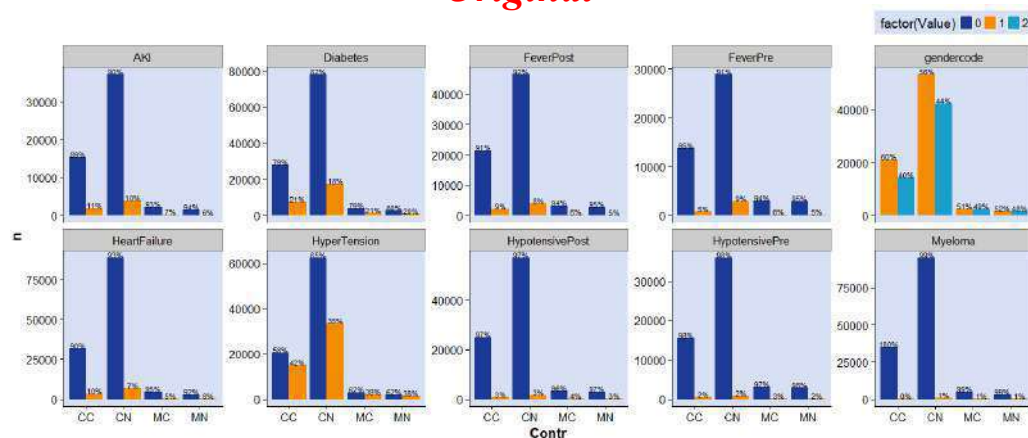
Original



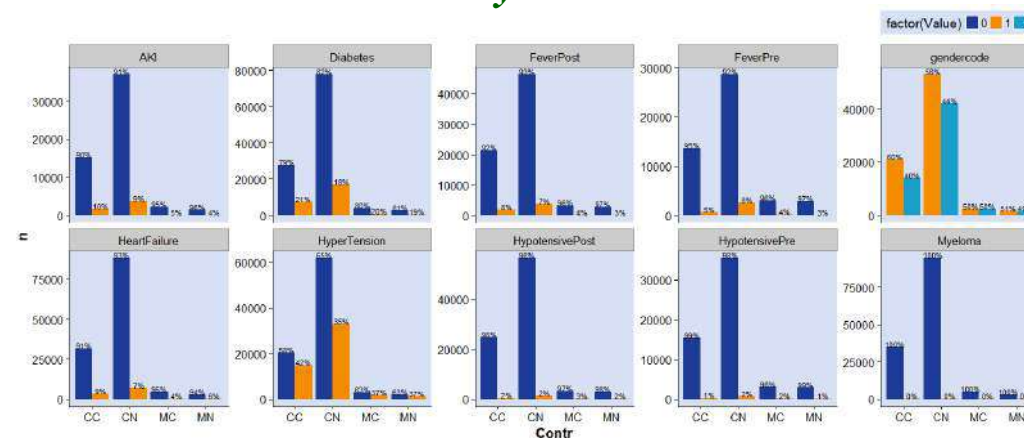
Synthetic



Original



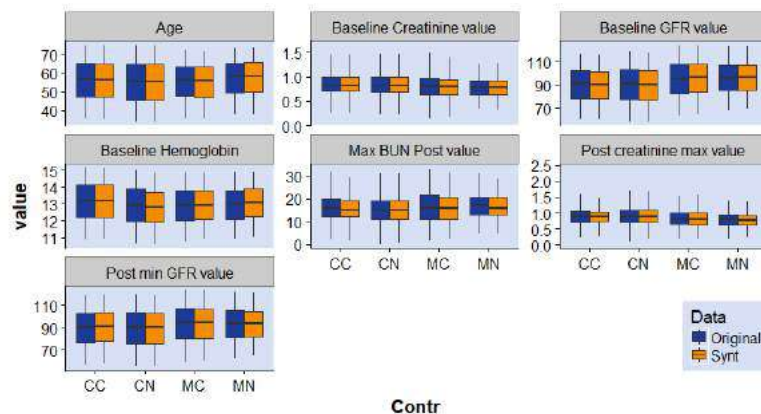
Synthetic



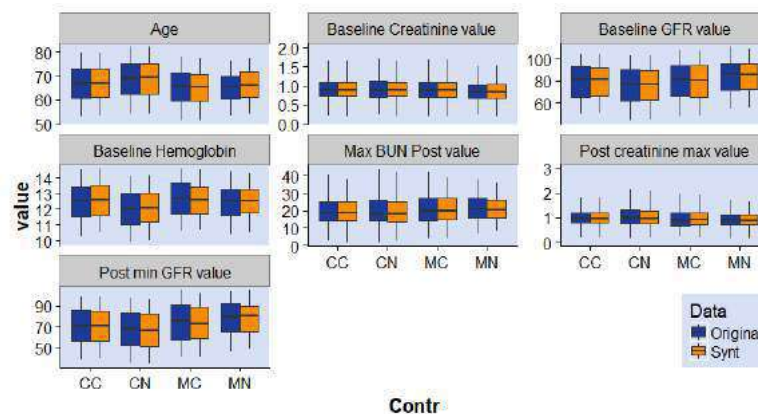
The effect of MRI contrast media on renal function

Dr. Yuri Gorelik

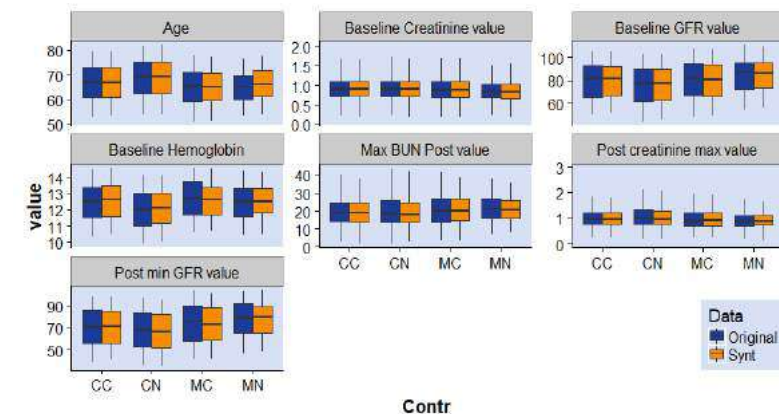
All Data



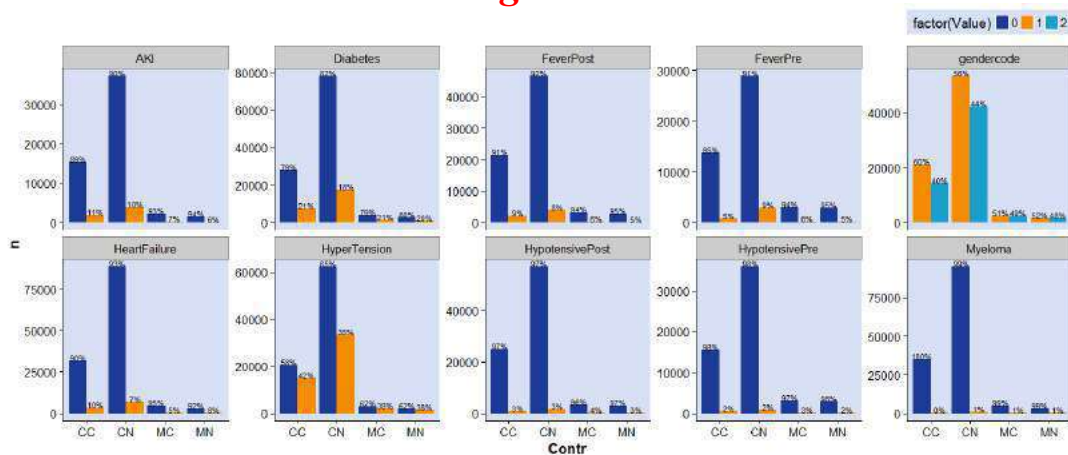
Diabetes = True



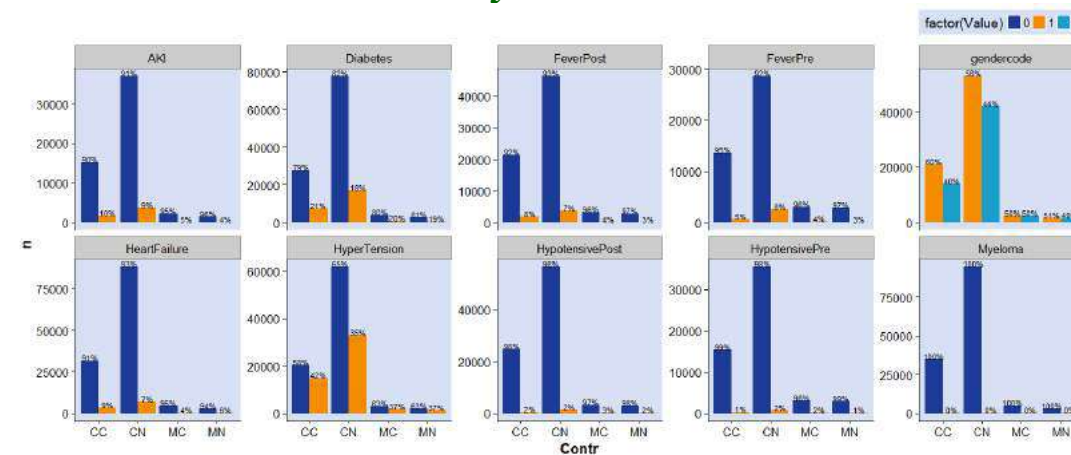
Diabetes = True



Original



Synthetic



Customer Base

- **Rambam** Health Care Campus
- **Clalit**, Israel's largest HMO and the second largest HMO in the world with 4 million patients
- **Maccabi**, Israel's second largest HMO with 2 million patients
- **Assuta**, Israel's largest and leading private medical center
- **Sheba** – the biggest hospital in the middle east

Altogether, more than 6 million Israeli lives, 80% of the Israeli market



**One of the biggest
pharma's in the world**

The Power of Data Liberation



corporate
search
 clinical
 laboratory
 im
 kno
 ch
 pre
 stress
 um

A doctor in a white coat with a stethoscope is shown from the chest up. Overlaid on the image is a hexagonal grid of icons. The central hexagon is blue with a white DNA double helix. Surrounding it are other hexagons containing icons and text: 'Genetic testing' (top), 'DNA' (left), 'Sequencing' (right), 'Test' (bottom), and 'Health' (bottom right). There are also icons for a magnifying glass, a bar chart, a heart, and a plus sign.

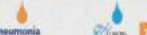
MDCClone Po

The diagram illustrates the MDCClone Po architecture. It shows data entering from multiple sources (Sales, Marketing, HR, Finance, etc.) into a central processing layer. This layer includes components like 'MDCClone Po' and 'MDCClone Po' which handle data transformation and integration. The processed data is then stored in a 'Data Lake' and can be accessed by various applications and users. The diagram also shows a timeline at the bottom indicating the progression of data from 'Data Source' to 'Data Lake'.

Advanced Big Data Platform

[illegible]

The effect of various drugs on patients with pneumonia and high blood pressure had Hypoglycemia during hospitalization



1 Pneumonia Hypertension

2 Hospitalization

3 Hypoglycemia

4 Hypertension

5 Hypoglycemia

6 Hypertension

A conceptual illustration showing a pair of hands cupping a glowing blue and white Earth globe. The globe is surrounded by several circular icons connected by thin lines, representing various business and technological themes such as communication, finance, and industry.

Thank You!!!

Boaz Gur-Lavie

Boaz@mdclone.com

+972-54-4640119